

Product no **AS10 673**  
**AGO9 | Argonaute 9**

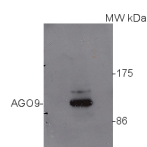
## Product information

<b>Immunogen</b>	KLH-conjugated synthetic peptide derived from <i>Arabidopsis thaliana</i> AGO9 protein sequence UniProt: <a href="#">Q84YI4</a> , TAIR: <a href="#">At5g21150</a> .
<b>Host</b>	Rabbit
<b>Clonality</b>	Polyclonal
<b>Purity</b>	Immunogen affinity purified serum in PBS pH 7.4.
<b>Format</b>	Lyophilized
<b>Quantity</b>	50 µg
<b>Reconstitution</b>	For reconstitution add 50 µl of sterile water
<b>Storage</b>	Store lyophilized/reconstituted at -20°C; once reconstituted make aliquots to avoid repeated freeze-thaw cycles. Please remember to spin the tubes briefly prior to opening them to avoid any losses that might occur from material adhering to the cap or sides of the tube.

## Application information

<b>Recommended dilution</b>	5 µg of antibody per 1 gram of a fresh tissue (IP), 1 : 10 000 (WB)
<b>Expected   apparent MW</b>	101 kDa
<b>Confirmed reactivity</b>	<i>Arabidopsis thaliana</i>
<b>Predicted reactivity</b>	<i>Arabidopsis thaliana</i>
<b>Not reactive in</b>	No confirmed exceptions from predicted reactivity are currently known
<b>Additional information</b>	AGO expression may be cell/tissue specific and using floral tissue is recommended where most of the AGOs are expressed the highest. Seedlings can be used as a negative control.  Use of proteasome inhibitors as MG132 can help to stabilize AGO proteins during extraction procedure.  A recommended whole-mount immunolocalization protocol can be found <a href="#">here</a> .
<b>Selected references</b>	<a href="#">Hou et al. (2021)</a> High-throughput single-cell transcriptomics reveals the female germline differentiation trajectory in <i>Arabidopsis thaliana</i> . <i>Commun Biol.</i> 2021 Oct 1;4(1):1149. doi: 10.1038/s42003-021-02676-z. PMID: 34599277; PMCID: PMC8486858. (immunolocalization) <a href="#">Oliver &amp; Martinez. (2021)</a> Accumulation dynamics of ARGONAUTE proteins during meiosis in <i>Arabidopsis</i> . <i>Plant Reprod.</i> 2021 Nov 23. doi: 10.1007/s00497-021-00434-z. Epub ahead of print. PMID: 34812935. <a href="#">Sprunck et al. (2019)</a> . Elucidating small RNA pathways in <i>Arabidopsis thaliana</i> egg cells. <a href="http://dx.doi.org/10.1101/525956">http://dx.doi.org/10.1101/525956</a> <a href="#">Su et al. (2017)</a> . The THO Complex Non-Cell-Autonomously Represses Female Germline Specification through the TAS3-ARF3 Module. <i>Curr Biol.</i> 2017 Jun 5;27(11):1597-1609.e2. doi: 10.1016/j.cub.2017.05.021. <a href="#">Havecker et al. (2010)</a> The RNA-directed DNA methylation <i>Arabidopsis</i> Argonautes functionally diverge based on expression and interaction with target loci. <i>Plant Cell</i> 22(2): 321-34.

## Application example



80 µg of *Arabidopsis thaliana* soluble total cell extract (extracted in 20 mM Tris pH 7.5, 5 mM MgCl<sub>2</sub>, 2.5 mM DTT, 300 mM NaCl, 0.1% NP-40, 1% protease inhibitor) was separated on 6% SDS-PAGE and blotted 1 h to **nitrocellulose**. Filters were blocked 1 h with 5% low-fat milk powder in TBS-TT (0.25% TWEEN20; 0.1% Triton-X) and probed with anti-AGO9 antibody (1:10 000, 1 h) and secondary anti-rabbit antibody (HRP conjugated, Agrisera [AS09 602](#)) (1:15 000, 1 h) in TBS-TT containing 5% low fat milk powder. Antibody incubations were followed by washings in TBS-TT. All steps were performed at RT with agitation. Blots were developed for 5 min with chemiluminescent detection reagent according to the manufacturer's instructions. Exposure time was 30 seconds.



This product is **for research use only** (not for diagnostic or therapeutic use)

**contact: [support@agrisera.com](mailto:support@agrisera.com)**

Agrisera AB | Box 57 | SE-91121 Vännäs | Sweden | +46 (0)935 33 000 | [www.agrisera.com](http://www.agrisera.com)

Courtesy Dr. Ericka Havecker, University of Cambridge, UK