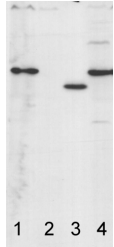




## Application example



10 ug of chlorophyll/well of *Chlamydomonas reinhardtii* total cell extract (1), *Chlamydomonas reinhardtii* subunit gamma deletion mutant thylakoid membrane fraction (2), *Arabidopsis thaliana* thylakoid membrane fraction (3), *Chlamydomonas reinhardtii* thylakoid membrane preparation (4) were separated on 12-18% acrylamide-8M urea gel and blotted to nitrocellulose membrane. Filters were blocked 1 h with 5% dry milk in 1 x PBS and probed with anti-ATP synthase subunit gamma antibody (**AS08 312**, 1: 25 000, 1h) and secondary HRP-conjugated anti-rabbit antibody (1: 10 000, 1 h) in 1 x PBS containing 5% dry milk. All steps were performed at RT with agitation. Signal was detected with chemiluminescent detection reagent, exposure time 30'' and 3 min (overexposed).

*Arabidopsis* membrane preparation has been done according to [Lezhneva et al. \(2008\)](#) A novel pathway of cytochrome c biogenesis is involved in the assembly of the cytochrome b6f complex in *Arabidopsis* chloroplasts. *J Biol. Chem.*, 283:24608-24616 and *Chlamydomonas* membranes were prepared according to [Chua & Bennoun \(1975\)](#) Thylakoid membrane polypeptides of *Chlamydomonas reinhardtii*: wild-type and mutant strains deficient in photosystem II reaction center. *PNAS* 72:2175-2179

Courtesy Dr. Yves Choquet, French National Centre for Scientific Research, France