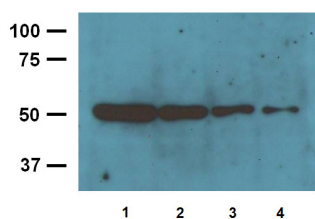


Product no **AS20 4382****Beta-tubulin, (loading control antibody), mouse monoclonal****Product information**

<b>Immunogen</b>	Synthetic peptide derived from the N-terminal of the human beta-tubulin
<b>Host</b>	Mouse
<b>Clonality</b>	Monoclonal
<b>Subclass/isotype</b>	IgG2a
<b>Purity</b>	IgG2a purified on Protein A n 10mM PBS, pH 7.2, with 1% BSA and 0.05% sodium azide.
<b>Format</b>	Lyophilized
<b>Quantity</b>	100 µg
<b>Storage</b>	Store at -20 °C for 3 years or more, Reconstitute with distilled water to desired concentration before use, Aliquot to avoid repeated freeze-thaw cycles, Store aliquots at 4 °C for several days to weeks
<b>Additional information</b>	10mM PBS, pH 7,2, with 1% BSA and 0,05% sodium azide

**Application information**

<b>Recommended dilution</b>	1: 2000 - 1: 5000 (WB), for other techniques end user needs to determine most optimal dilution
<b>Expected   apparent MW</b>	50 kDa
<b>Confirmed reactivity</b>	Chicken, human, monkey, mouse, rat, rabbit
<b>Not reactive in</b>	No confirmed exceptions from predicted reactivity are currently known
<b>Additional information</b>	This antibody recognizes both the native and denatured forms of Beta-tubulin

**Application example**

Varied amounts of mouse brain tissue lysate: 10 µg/lane **(1)**, 5 µg/lane **(2)**, 2.5/lane µg **(3)**, 1.25 µg/lane **(4)** were extracted and separated on SDS-PAGE and blotted to a membrane. Primary antibodies were used at a dilution of 1: 4000 (0.25 µg/ml). Reaction was developed by chemiluminescence.