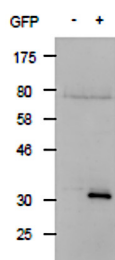


Product no AS20 4512**EGFP, S65T-GFP, RS-GFP, YFP| Green Fluorescence Protein and its variants****Product information**

Immunogen	Recombinant, His-tagged EGFP protein from <i>Aequorea victoria</i> , UniProt: P42212
Host	Rabbit
Clonality	Polyclonal
Purity	Serum. Contains 0.05 % sodium azide.
Format	Liquid
Quantity	100 µl
Storage	Store at -20°C, Avoid repeated freeze-thaw cycles. Please remember to spin the tubes briefly prior to opening them to avoid any losses that might occur from material adhering to the cap or sides of the tube.

Application information

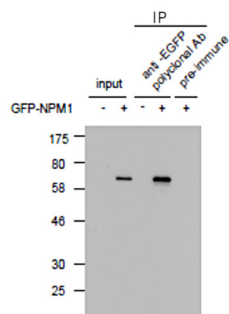
Recommended dilution	assay dependent (IP), 1 : 4000 (IF), 1 : 2000 (WB)
Confirmed reactivity	EGFP, S65T-GFP, RS-GFP, YFP
Selected references	Tatsumi et al. (2017) . G196 epitope tag system: a novel monoclonal antibody, G196, recognizes the small, soluble peptide DLVPR with high affinity. <i>Sci Rep.</i> 2017 Mar 7;7:43480.doi: 10.1038/srep43480. (Immunofluorescence, Western blot)



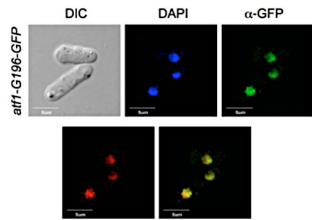
Lysate of 293T cells transfected with empty vector (left panel "-")
 Lysate of 293T cells transfected with the plasmid carrying the GFP gene

Membrane for transfer: nitrocellulose.

Anti-GFP antibodies were used at 1 : 2000 dilution 1h/RT incubation in TBS-T. Followed by washes and incubation with secondary antibodies, HRP-conjugated and detection using chemiluminescence, following manufacture's recommendations.



-: Lysate of 293T cells transfected with an empty vector
 +: Lysate of 293T cells transfected with carrying the GFP-tagged NPM1 gene



Immunofluorescence of GFP- and G196-tagged nuclear protein in fission yeast Atf1-G196-GFP expressing cells. Fixation: 3 % formaldehyde. Anti-GFP polyclonal antibodies: 1: 1000 over night incubation at RT, followed by incubation with Alexa-488 anti-rabbit secondary antibodies.