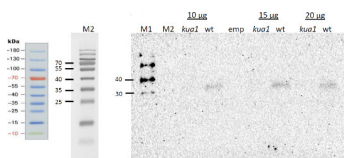


Product no **AS15 2989****KUA1 | MYB transcription factor****Product information**

<b>Immunogen</b>	KLH-conjugated peptide derived from <i>Arabidopsis thaliana</i> KUA1 protein sequence, UniProt: <a href="#">Q9LVS0</a> , TAIR: <a href="#">AT5G47390</a> . The peptide used to elicit this antibody is also conserved in MYB1R1 of <i>Triticum urartu</i> UniProt: <a href="#">M7YW99</a> and MYBS3 of <i>Oryza sativa</i> subsp. japonica, UniProt: <a href="#">Q7XC57-2</a>
<b>Host</b>	Rabbit
<b>Clonality</b>	Polyclonal
<b>Purity</b>	Serum
<b>Format</b>	Lyophilized
<b>Quantity</b>	50 µl
<b>Reconstitution</b>	For reconstitution add 50 µl of sterile water
<b>Storage</b>	Store lyophilized/reconstituted at -20°C; once reconstituted make aliquots to avoid repeated freeze-thaw cycles. Please remember to spin the tubes briefly prior to opening them to avoid any losses that might occur from material adhering to the cap or sides of the tube.

**Application information**

<b>Recommended dilution</b>	1 : 5000 (WB)
<b>Expected   apparent MW</b>	39,6 kDa
<b>Confirmed reactivity</b>	<i>Arabidopsis thaliana</i> , <i>Beta vulgaris</i>
<b>Predicted reactivity</b>	<i>Capsicum annuum</i> , <i>Cephalotus follicularis</i> , <i>Cicer arietinum</i> , <i>Glycine max</i> , <i>Glycine soja</i> , <i>Gossypium arboreum</i> , <i>Cucumis melo</i> , <i>Medicago truncatula</i> , <i>Nelumbo nucifera</i> , <i>Nicotiana tabacum</i> , <i>Nicotiana sylvestris</i> , <i>Theobroma cacao</i> , <i>Vigna radiata</i> var. <i>radiata</i> Species of your interest not listed? <a href="#">Contact us</a>
<b>Not reactive in</b>	No confirmed exceptions from predicted reactivity are currently known
<b>Additional information</b>	The antibody was used in tissue printing on German sugar beet and was found in vascular bundles
<b>Selected references</b>	<a href="#">Pandey</a> et al. (2019). Epigenetic control of UV-B-induced flavonoid accumulation in <i>Artemisia annua</i> L. <i>Planta</i> . 2019 Feb;249(2):497-514. doi: 10.1007/s00425-018-3022-7.

**Application example**

10-20 µg of total protein from fresh *Arabidopsis thaliana* leaves was grinded and extracted in 10 mM Tris/HCL pH 7,5; 50 mM NaCl; 0,5 mM EDTA, 1% Triton X-100 supplemented with protease inhibitor cocktail (Sigma, P9599). After 15 minutes of incubation on ice the extracts were centrifuged at 6000g for 5 minutes at 4 degrees. The supernatant was mixed with 2X Laemli buffer and denatured at 96°C for 5 min. After cooling down, the samples were separated on 12 % SDS-PAGE gel and blotted to PVDF in 9 minutes using a Pierce G2 Fast Blotter in transfer buffer. Blots were blocked with 5% blocking solution (containing non-fat milk protein in TBS) for 1h at room temperature (RT) with agitation. Blot was incubated in the primary antibody at a dilution of 1: 5000 overnight in 5% blocking solution. The antibody solution was decanted and the blot was rinsed briefly twice, then washed twice for 10 min with TBS-T and twice for 10 min in 5% blocking solution at RT with agitation. Blot was incubated in secondary antibody (anti-rabbit IgG horse radish peroxidase conjugated, from Agrisera [AS09 602](#)) diluted to 1:10 000 in 5% blocking solution for 90 minutes at RT with agitation. The blot was washed four times in TBS-T for 10 minutes as described above and developed using chemiluminescent detection reagent. Blots were imaged using a BioRad Chemidoc system using an exposure time of 300 seconds.

Courtesy Dr. Jozefus Schippers, University of Aachen, Germany