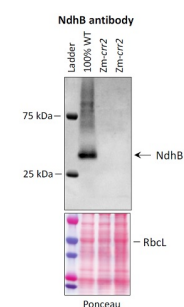


Product no **AS16 4064****NdhB | NAD(P)H-quinone oxidoreductase subunit 2 (chloroplastic)****Product information**

<b>Immunogen</b>	KLH-conjugated synthetic peptide derived from <i>Arabidopsis thaliana</i> NdhB protein sequence, UniProt: <a href="#">P0CC32</a> , <a href="#">P0CC33</a> , TAIR: <a href="#">AtCg00890</a> , <a href="#">ATCG01250</a>
<b>Host</b>	Rabbit
<b>Clonality</b>	Polyclonal
<b>Purity</b>	Immunogen affinity purified serum in PBS pH 7.4.
<b>Format</b>	Lyophilized
<b>Quantity</b>	50 µg
<b>Reconstitution</b>	For reconstitution add 50 µl of sterile water
<b>Storage</b>	Store lyophilized/reconstituted at -20°C; once reconstituted make aliquots to avoid repeated freeze-thaw cycles. Please remember to spin the tubes briefly prior to opening them to avoid any losses that might occur from material adhering to the cap or sides of the tube.

**Application information**

<b>Recommended dilution</b>	1:1000 (WB)
<b>Expected   apparent MW</b>	35 kDa
<b>Confirmed reactivity</b>	<i>Arabidopsis thaliana</i> , <i>Hordeum vulgare</i> , <i>Zea mays</i>
<b>Predicted reactivity</b>	<i>Anastatica hierochuntica</i> , <i>Arabis stelleri</i> , <i>Barbarea verna</i> , <i>Braya humilis</i> , <i>Bunias orientalis</i> , <i>Cakile arabica</i> , <i>Camelina sativa</i> , <i>Cannabis sativa</i> , <i>Capsella bursa-pastoris</i> , <i>Capsella rubella</i> , <i>Cardamine impatiens</i> , <i>Chorisporea tenella</i> , <i>Cleomella serrulata</i> , <i>Cochlearia pyrenaica</i> , <i>Crucihimalaya wallichii</i> , <i>Dontostemon micranthus</i> , <i>Euclidium syriacum</i> , <i>Eutrema yunnanense</i> , <i>Farsetia stylosa</i> , <i>Fragaria ananassa</i> , <i>Hesperis matronalis</i> , <i>Ionopsidium acaule</i> , <i>Lepidium virginicum</i> , <i>Lobularia maritima</i> , <i>Megadenia pygmaea</i> , <i>Matthiola incana</i> , <i>Nasturtium officinale</i> , <i>Neotorularia korolkowii</i> , <i>Noccaea caerulescens</i> , <i>Olimarabidopsis pumila</i> , <i>Orychophragmus taibaiensis</i> , <i>Oryza sativa</i> , <i>Pachycladon ensyisii</i> , <i>Phaseolus vulgaris</i> , <i>Physaria ludoviciana</i> , <i>Pugionium cornutum</i> , <i>Schrenkiella parvula</i> , <i>Tarenaya hassleriana</i> , <i>Thlaspi arvense</i> Species of your interest not listed? <a href="#">Contact us</a>
<b>Not reactive in</b>	cyanobacteria, <i>Physcomitrella patens</i>
<b>Selected references</b>	<a href="#">Penzler et al. (2022)</a> Commonalities and specialties in photosynthetic functions of PROTON GRADIENT REGULATION5 variants in Arabidopsis. <i>Plant Physiol.</i> 2022;190(3):1866-1882. doi:10.1093/plphys/kiac363 <a href="#">Shen et al. (2022)</a> Architecture of the chloroplast PSI-NDH supercomplex in <i>Hordeum vulgare</i> . <i>Nature.</i> 2022 Jan;601(7894):649-654. doi: 10.1038/s41586-021-04277-6. Epub 2021 Dec 8. PMID: 34879391. <a href="#">Wada et al. (2021)</a> Identification of a Novel Mutation Exacerbated the PSI Photoinhibition in pgr5/pgr1 Mutants; Caution for Overestimation of the Phenotypes in Arabidopsis pgr5-1 Mutant. <i>Cells.</i> 2021 Oct 26;10(11):2884. doi: 10.3390/cells10112884. PMID: 34831107; PMCID: PMC8616342.

**Application example**

5µg of total protein from *Zea mays* leaf seedling tissue was extracted with protein extraction buffer (100 mM Tris pH7.5, 10% glycerol, 1 mM EDTA, 1mM EGTA, 2mM pMSF, 0.002 mg leupeptin, 0.002 mg pepstatin A, 2.5 mM DTT) and denatured in 1XPSB (33 mM Tris pH 6.8, 50 mM 2-Mercaptoethanol, 2% SDS, 10% glycerol, 0.1% bromophenol blue) at 70C for 5 min, separated on 4-20% Tris-Glycine SDS-PAGE and blotted overnight to nitrocellulose using tank transfer. Blots were blocked with 10% milk in 1XTBST for 1h at room temperature (RT) with agitation. Blot was incubated in the primary antibody at a dilution of 1:1000 for 1h at RT with agitation in 10% milk in 1XTBS-T. The antibody solution was decanted and the blot was rinsed briefly twice, then washed 3 times for 5 min in TBS-T at RT with agitation. Blot was incubated in secondary

This product is **for research use only** (not for diagnostic or therapeutic use)

contact: [support@agrisera.com](mailto:support@agrisera.com)

Agrisera AB | Box 57 | SE-91121 Vännäs | Sweden | +46 (0)935 33 000 | [www.agrisera.com](http://www.agrisera.com)

antibody (anti-rabbit IgG horse radish peroxidase conjugated, from Agrisera, [AS09 602](#)) diluted to 1:10,000 in 10% milk in 1XTBS-T for 1h at RT with agitation. The blot was washed as above and developed for 2 min with chemiluminescent detection reagent.

Courtesy Rosalind Carrier, University of Oregon, USA