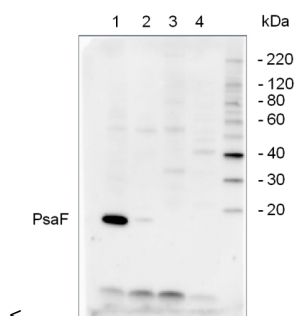


Product no **AS06 104****PsaF | PSI-F subunit of photosystem I (plant)****Product information**

Immunogen	KLH-conjugated synthetic peptide derived from the PsaF protein sequence of <i>Arabidopsis thaliana</i> (At1g31330). This peptide sequence is not completely conserved in mono- and dicots.
Host	Rabbit
Clonality	Polyclonal
Purity	Serum
Format	Lyophilized
Quantity	50 µl
Reconstitution	For reconstitution add 50 µl of sterile water
Storage	Store lyophilized/reconstituted at -20°C; once reconstituted make aliquots to avoid repeated freeze-thaw cycles. Please remember to spin the tubes briefly prior to opening them to avoid any losses that might occur from material adhering to the cap or sides of the tube.

Application information

Recommended dilution	1 : 1000 (WB)
Expected apparent MW	24 kDa 17 kDa for <i>Arabidopsis thaliana</i>
Confirmed reactivity	<i>Arabidopsis thaliana</i> , <i>Briopsis corticulans</i> , <i>Hordeum vulgare</i> (very weak), <i>Nicotiana tabaccum</i> , <i>Oryza sativa</i> , <i>Spinacia oleracea</i>
Predicted reactivity	<i>Catalpa bungei</i> , <i>Micromonas</i> sp., <i>Populus trichocarpa</i> , <i>Physcomitrium patens</i> , <i>Ricinus communis</i> Species of your interest not listed? Contact us
Not reactive in	<i>Chlamydomonas reinhardtii</i> , <i>Synechococcus</i> PCC 7942
Selected references	Schmid et al. (2018) . PUMPKIN, the sole Plastid UMP Kinase, Associates with Group II Introns and Alters Their Metabolism. <i>Plant Physiol.</i> 2018 Nov 8. pii: pp.00687.2018. doi: 10.1104/pp.18.00687. Patil et al. (2018) . FZL is primarily localized to the inner chloroplast membrane however influences thylakoid maintenance. <i>Plant Mol Biol.</i> 2018 Jul;97(4-5):421-433. doi: 10.1007/s11103-018-0748-3. Myouga et al. (2018) . Stable accumulation of photosystem II requires ONE-HELIX PROTEIN1 (OHP1) of the light harvesting-like family. <i>Plant Physiol.</i> 2018 Feb 1. pii: pp.01782.2017. doi: 10.1104/pp.17.01782. Kanazawa et al. (2017) . Chloroplast ATP Synthase Modulation of the Thylakoid Proton Motive Force: Implications for Photosystem I and Photosystem II Photoprotection. <i>Front Plant Sci.</i> 2017 May 3;8:719. doi: 10.3389/fpls.2017.00719. Qin et al. (2014) . Isolation and characterization of a PSI-LHCI super-complex and its sub-complexes from a siphonaceous marine green alga, <i>Bryopsis Corticulans</i> . <i>Photosynth Res.</i> 2014 Sep 12.

Application example

2 µg of total leaf protein of *Arabidopsis thaliana* (1) and *Hordeum vulgare* (2) and total cellular protein of *Chlamydomonas reinhardtii* (3) and *Synechococcus* PCC 7942 (4) isolated with PEB ([AS08 300](#)) were separated on **4-12% Nupage Bis-Tris** gels in MES running buffer (Invitrogen) at 200V for 35 minutes. Proteins were transferred for 80 minutes at 30V to a **PVDF** membrane pre-wetted in methanol and equilibrated in 1X transfer buffer. Blots were blocked immediately following transfer in 2% blocking reagent in 20 mM Tris, 137 mM sodium chloride pH 7.6 with 0.1% (v/v) Tween-20 (TBS-T) and probed with **anti-PsaF** (AS06 104, **1:1000**) and **secondary HRP-conjugated** goat anti-rabbit antibody (**1:50 000**) for 1 hr in TBS-T containing 2% ECL Advance blocking reagent (GE Healthcare). Antibody incubations were followed by **washings in TBS-T** (15, +5, +5, +5 min). All steps were performed **at RT with agitation**. Signals were detected after 30 s using

This product is **for research use only** (not for diagnostic or therapeutic use)

contact: support@agrisera.com

Agrisera AB | Box 57 | SE-91121 Vännäs | Sweden | +46 (0)935 33 000 | www.agrisera.com

chemiluminescence detection reagent, according to the manufacturers instructions and a CCD imager (FluorSMax, Bio-Rad).