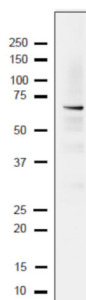


Product no **AS21 4550****RFa1/Rpa1 | Replication factor protein 1 (*Saccharomyces cerevisiae*)****Product information**

<b>Immunogen</b>	Purified, recombinant Rfa1 protein (without a tag) from <i>Saccharomyces cerevisiae</i> , UniProt: <a href="#">P22336</a>
<b>Host</b>	Rabbit
<b>Clonality</b>	Polyclonal
<b>Purity</b>	Serum. Contains 0.05 % sodium azide.
<b>Format</b>	Liquid
<b>Quantity</b>	100 µl
<b>Storage</b>	Store at -20°C; make aliquots to avoid repeated freeze-thaw cycles. Please remember to spin the tubes briefly prior to opening them to avoid any losses that might occur from material adhering to the cap or sides of the tube.

**Application information**

<b>Recommended dilution</b>	1 : 200 (IP), 1 : 2000 (WB)
<b>Expected   apparent MW</b>	70,3 kDa
<b>Confirmed reactivity</b>	<i>Saccharomyces cerevisiae</i>
<b>Predicted reactivity</b>	Species of your interest not listed? <a href="#">Contact us</a>



10 µg of a crude extract of *Saccharomyces cerevisiae* strain BY4741 was separated on a 10-20 % gradient gel by SDS-PAGE and blotted to a PVDF membrane using wet transfer. Primary antibody was incubated at 1 : 2000 for 1h/RT in TBS-T, followed by washes and incubation with a secondary goat anti-rabbit IgG HRP conjugated antibodies, used at 1 : 10 000 1h/RT. The reaction was developed using chemiluminescence following manufacture's recommendations.