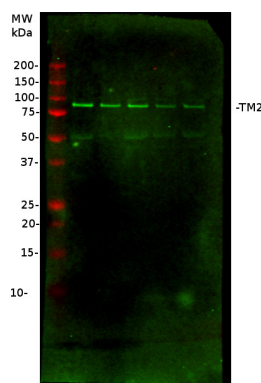


Product no **AS15 3062****TM2 | Tobacco mosaic virus resistance-2****Product information**

<b>Immunogen</b>	KLH-conjugated peptide derived from TM2 protein sequence, UniProt: <a href="#">C3UZ14</a>
<b>Host</b>	Rabbit
<b>Clonality</b>	Polyclonal
<b>Purity</b>	Serum
<b>Format</b>	Lyophilized
<b>Quantity</b>	50 µl
<b>Reconstitution</b>	For reconstitution add 50 µl of sterile water
<b>Storage</b>	Store lyophilized/reconstituted at -20°C; once reconstituted make aliquots to avoid repeated freeze-thaw cycles. Please remember to spin the tubes briefly prior to opening them to avoid any losses that might occur from material adhering to the cap or sides of the tube.

**Application information**

<b>Recommended dilution</b>	1 : 5000 (WB)
<b>Expected   apparent MW</b>	98   99 kDa
<b>Predicted reactivity</b>	<i>Brassica napus</i> , <i>Micromonas sp.</i> , <i>Physcomitrella patens</i> , <i>Pinus sitchensis</i> , <i>Solanum tuberosum</i> , <i>Volvox carteri</i>
	Species of your interest not listed? <a href="#">Contact us</a>
<b>Not reactive in</b>	No confirmed exceptions from predicted reactivity are currently known

**application example**

~0.5 g of *Solanum lycopersicum* cv M82 leaf tissue was ground with 20% TCA in acetone and finally dissolve in 200 µl UTN (urea, Tris-HCl and NaCl). The 10 µl samples were denatured with laemmli buffer at 90°C for 5 mins followed by standing on ice 2 mins. Samples were run on 10% SDS-PAGE gel and transferred to PVDF membrane by semi-dry transfer at 10V for 1 hour. Blots were then blocked with 5% non-fat milk in TBST for 2 hours at RT with agitation. Primary anti-body was diluted in 1:5000 and incubated with the blots for 2 hours at RT with agitation. Blots were rinsed twice by TBST for 15 mins each. Finally, fluorescent anti-rabbit secondary antibody was diluted in 1:50 000 and incubated with the blots for 2 hours at RT with agitation. The blots were imaged by LI-COR odyssey image system.

Courtesy Dr. Zhengming Wang, University of Cambridge, UK