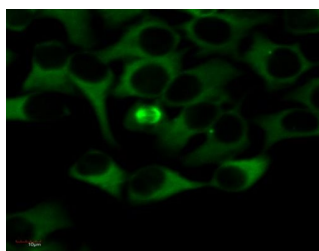


Product no **AS21 4626****Tubulin alpha chain, FITC conjugated (clone TU-01)****Product information**

<b>Immunogen</b>	Fraction of tubulin purified from porcine brain by two cycles of polymerization - depolymerization,
<b>Host</b>	Mouse
<b>Clonality</b>	Monoclonal
<b>Subclass/isotype</b>	IgG1
<b>Purity</b>	Conjugated with fluorescein isothiocyanate (FITC) under optimum conditions. The conjugate is purified by size-exclusion chromatography.
<b>Format</b>	Liquid at 1 mg/ml.
<b>Quantity</b>	0,1 mg
<b>Storage</b>	Store in the dark at 2-8°C. Do not freeze. Avoid prolonged exposure to light. Do not use after expiration date stamped on vial label. Please remember to spin the tubes briefly prior to opening them to avoid any losses that might occur from material adhering to the cap or sides of the tube.
<b>Additional information</b>	This antibody is recognizing a defined epitope (aa 65-97) on N-terminal structural domain of alpha-tubulin 1, UniProt: <a href="#">Q71U36</a>

**Application information**

<b>Recommended dilution</b>	1-4 µg/ml (Flowcyt)
<b>Expected   apparent MW</b>	50   54 kDa
<b>Confirmed reactivity</b>	<i>Arabidopsis thaliana</i> , <i>Eisenia</i> , <i>Nicotiana tabacum</i> , <i>Paramecium</i> , <i>Saccharomyces cerevisiae</i> , human, mouse, pig, turkey
<b>Predicted reactivity</b>	Species of your interest not listed? <a href="#">Contact us</a>
<b>Selected references</b>	To be added when available, antibody released in October 2021.



HeLa cells stained with alpha tubulin monoclonal antibodies, conjugated with FITC.