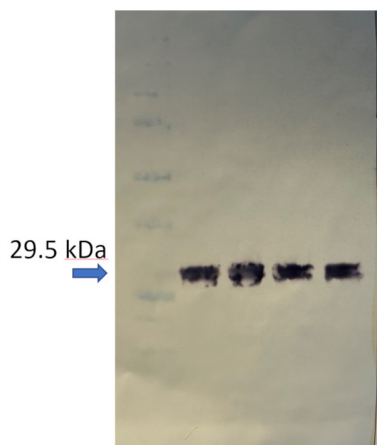


Product no **AS21 4676****V5 (mouse antibody (monoclonal))****Product information**

Immunogen	KLH-conjugated GKPIPPLLGLDST synthetic peptide
Host	Mouse
Clonality	Monoclonal
Subclass/isotype	IgG1a
Purity	Affinity purified in PBS pH 7.4. Contains 0.02 % sodium azide. Contains 50 % glycerol.
Format	Liquid
Quantity	50 µg
Storage	Store at -20 °C. Make aliquots to avoid repeated freeze-thaw cycles. Please remember to spin the tubes briefly prior to opening them to avoid any losses that might occur from material adhering to the cap or sides of the tube.

Application information

Recommended dilution	1: 50 - 1: 200 (IF), 1: 200 - 1: 2000 (IP), 1: 500 - 1: 5000 (WB)
Expected apparent MW	Depends upon MW of fused protein
Confirmed reactivity	V5-tagged fusion proteins
Selected references	To be added when available, this antibody was released in October 2021.



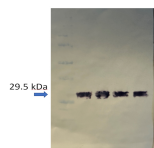
The antigen is a recombinant protein (GFP bright variant, called "Dasher") fused in C-terminus to V5 epitope. Reagents and apparatus: SDS sample buffer (2x SDS, 0.1M DTT; 0.1M Tris-HCl, pH 8.0; 25mM EDTA; 0.01 % Bromophenol blue; 70% glycerol); SDS-PAGE 10x tricine running buffer (121gm Tris-Base, 179gm tricine, 10gm SDS, 900mL H₂O); Blotting buffer (48mM Tris, 39mM glycine, 1.3mM SDS, 200mL methanol diluted to 1L using H₂O, pH not adjusted); TBS (0.05 M Tris, 0.9% NaCl adjust pH to 7.5); TBS-T (TBS plus 0.2% Tween 20). Samples were boiled at 100 degree for 10 minutes in 1x final concentration of SDS sample buffer. Separated on a NuPage 4-12% SDS-PAGE and blotted for 1 h to nitrocellulose membranes, using: semi-dry transfer. Blot was blocked with 2% casein hydrolysate 4 °C/ON. And 20 minutes at RT under agitation. Blot was incubated in the primary antibody at a dilution of 1: 10000 for 1h/RT with agitation in TBS-T with agitation. The antibody solution was decanted, and the blot was rinsed briefly twice, then washed once for 15 min and 3 times for 5 min in TBS-T at RT with agitation. Blot was incubated in matching secondary antibody (anti-mouse IgG alkaline phosphatase conjugated) diluted to 1: 10000 in for 1 h/RT with agitation. The blot was washed as above and developed with a chromogenic BCIP/NBT detection reagent. After 15 minutes, the blot was washed and the color development was stopped by decanting the staining solution and immersing the membranes into 20 mM EDTA solution.

Courtesy of Dr.Giuseppe Dionisio, Aarhus University, Danmark

This product is **for research use only** (not for diagnostic or therapeutic use)

contact: support@agrisera.com

Agrisera AB | Box 57 | SE-91121 Vännäs | Sweden | +46 (0)935 33 000 | www.agrisera.com



Immunofluorescent analysis cells transfected with a V5-tag protein. Primary antibody at 1:2000 dilution (blue DAPI, red anti-V5).