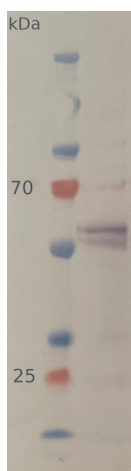


Product no **AS23 4916****UGPase | UDP-glucose pyrophosphorylase (cytoplasm marker, dicots)****Product information**

Immunogen	KLH-conjugated peptide derived from <i>Arabidopsis thaliana</i> UGP1, UniProt: A0A1I9LT02 and UGP2, UniProt: Q9M9P3 TAIR: AT3G03250 , AT5G17310
Host	Rabbit
Clonality	Polyclonal
Purity	Antigen affinity purified serum, in PBS pH 7.4
Format	Lyophilized
Quantity	50 µg
Reconstitution	For reconstitution add 50 µl, of sterile or deionized water.
Storage	Store lyophilized/reconstituted at -20°C; once reconstituted make aliquots to avoid repeated freeze-thaw cycles. Please, remember to spin tubes briefly prior to opening them to avoid any losses that might occur from lyophilized material adhering to the cap or sides of the tubes.

Application information

Recommended dilution	1 : 1000 - 1: 5000 (WB)
Expected apparent MW	51.7 52.3 kDa
Confirmed reactivity	<i>Arabidopsis thaliana</i> , <i>Hordeum vulgare</i> , <i>Zea mays</i>
Predicted reactivity	<i>Arachis hypogaea</i> , <i>Brachypodium distachyon</i> , <i>Brassica napus</i> <i>Cannabis sativa</i> , <i>Capsicum annuum</i> , <i>Glycine max</i> , <i>Gossypium</i> sp., <i>Malus domestica</i> , <i>Manihot esculenta</i> , <i>Medicago truncatula</i> , <i>Nicotiana tabacum</i> , <i>Pisum sativum</i> , <i>Populus</i> sp., <i>Ricinus communis</i> , <i>Saccharum</i> sp., <i>Solanum lycopersicum</i> , <i>Solanum tuberosum</i> , <i>Sorghum bicolor</i> , <i>Theobroma cacao</i>
	Species of your interest not listed? Contact us
	For monocotyl species, use AS14 2813
Not reactive in	<i>Marchantia polymorpha</i>
Selected references	To be added when available, antibody available in March 2024.



10 µg/well of total protein extracted from *Arabidopsis thaliana* leaf, using PEB extraction buffer (Agrisera [AS08 300](#)) and denatured with Invitrogen LDS sample buffer (4X) at 70°C/5 min. Samples were separated on Invitrogen NuPage Bis-Tris 4-12% SDS-PAGE and blotted for 1 h to Invitrogen PVDF (pore size of 0.45 µm), using: wet transfer. Blot was blocked with 5% milk in TBS-T for: 1h/RT with agitation. Blot was incubated in the primary antibody at a dilution of 1: 1 000 for 1h/RT with TBS-T Blocking. The antibody solution was decanted, and the blot was rinsed briefly twice, then washed once for 15 min and 3 times for 5 min in TBS-T at RT with agitation. Blot was incubated in matching secondary antibody (anti-rabbit IgG ALP conjugated, [AS09 60Z](#) lot 2302) diluted to 1: 5 000 in TBS-T Blocking for 0,5h/RT with agitation. The blot was washed as above and developed with [AS19 BCIP-NBT-PLUS](#) lot 08225181 for 1 min. As soon as the desired band is detectable, briefly wash the membrane in generous amounts of deionized water. Transfer the membrane to fresh deionized water and incubate for 2 minutes with agitation before placing



This product is **for research use only** (not for diagnostic or therapeutic use)

contact: support@agrisera.com

Agrisera AB | Box 57 | SE-91121 Vännäs | Sweden | +46 (0)935 33 000 | www.agrisera.com

the membrane on Whatman paper to dry.

Courtesy Agrisera