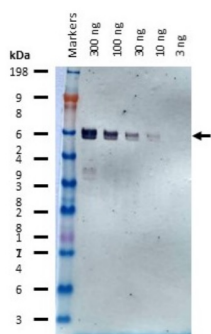


Product no **AS15 2935****His-tag | 6xHis, ALP Conjugated (Clone AD1,1,10)****Product information****Immunogen** | Polyhistidine (HHHHHH) tagged polypeptide**Host** | Mouse**Clonality** | Monoclonal**Purity** | Immunogen affinity purified in 25 mM Tris, 150 mM NaCl, 5 mM MgCl<sub>2</sub>, 0.12 mM ZnCl<sub>2</sub>, pH 7.4. with 2 mM sodium azide.**Format** | Lyophilized**Quantity** | 100 µg**Reconstitution** | For reconstitution add 100 µl of sterile water**Storage** | Store at 2-8°C. Product is stable for up to 4 weeks at 2-8°C after rehydration. For extended storage after rehydration, add an equal volume of glycerol and Store at -20°C.**Additional information** | Antibody is provided in: 25 mM Tris, 150 mM Sodium Chloride, 5 mM Magnesium Chloride, 0.12 mM Zinc Chloride, 2 mM Sodium Azide (pH 7.4)

Concentration: 0.1mg/ml

**Application information****Recommended dilution** | 1: 5000 - 10 000 (WB)**Expected | apparent MW** | depends upon fusion partner**Confirmed reactivity** | 6xHis tagged proteins**Additional information** | Final primary antibody dilution, depend upon amount of His6 tagged protein in analyzed sample.

Indicated amount of 6xHis tagged, 60 kDa protein has been loaded to each lane. Primary antibody incubation (AS15 2935): 1: 10 000 1h/RT  
 Followed by three washes and reaction was developed using alkaline phosphatase substrate.