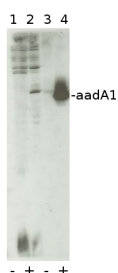


Product no **AS09 580****aadA1 | Aminoglycoside adenylyltransferase (chloroplast transformation marker)****Product information**

<b>Immunogen</b>	KLH-conjugated peptide derived from known aadA1 protein sequences
<b>Host</b>	Rabbit
<b>Clonality</b>	Polyclonal
<b>Purity</b>	Immunogen affinity purified serum in PBS pH 7.4.
<b>Format</b>	Lyophilized
<b>Quantity</b>	50 µg
<b>Reconstitution</b>	For reconstitution add 50 µl of sterile water
<b>Storage</b>	Store lyophilized/reconstituted at -20°C; once reconstituted make aliquots to avoid repeated freeze-thaw cycles. Please remember to spin the tubes briefly prior to opening them to avoid any losses that might occur from material adhering to the cap or sides of the tube.
<b>Additional information</b>	This product can be sold containing ProClin if requested

**Application information**

<b>Recommended dilution</b>	1 : 3 000 (WB)
<b>Expected   apparent MW</b>	30   30 kDa
<b>Confirmed reactivity</b>	aadA cassette in <i>Nicotiana tabacum</i> , <i>Chlamydomonas reinhardtii</i>
<b>Predicted reactivity</b>	<i>Acinetobacter baumannii</i> , <i>Enterobacter agglomerans</i> , <i>Klebsiella pneumoniae</i> , <i>Klebsiella oxytoca</i> , <i>Kluyvera ascorbata</i> , <i>Pseudomonas aeruginosa</i> , <i>Salmonella enterica subsp. enterica serovar Worthington</i> , <i>Staphylococcus aureus</i> , <i>Serratia sp.</i> , <i>Shigella flexneri</i>
	Species of your interest not listed? <a href="#">Contact us</a>
<b>Not reactive in</b>	No confirmed exceptions from predicted reactivity are currently known
<b>Selected references</b>	<a href="#">Lauersen</a> et al. (2018). Phototrophic production of heterologous diterpenoids and a hydroxy-functionalized derivative from <i>Chlamydomonas reinhardtii</i> . <i>Metab Eng.</i> 2018 Jul 12;49:116-127. doi: 10.1016/j.ymben.2018.07.005.

**Application example**

*Chlamydomonas reinhardtii* cells (**1,2**) (corresponding to 10 µg of chlorophyll) and soluble extracts of *Nicotiana tabacum* leaves (**3,4**) were separated on a 15% acrylamide gel containing 8M urea, transferred on nitrocellulose membrane, incubated with anti-aad1 antibodies in 1: 5000 dilution for 1 h in RT, followed by washes and incubation with a secondary anti-rabbit IgG antibody in 1: 10 000 dilution) and revealed by chemiluminescent detection reagent (3 min exposure). Tested *Chlamydomonas reinhardtii* and *Nicotiana tabacum* strains expressed (+) or not (-) the aadA cassette.

AadA protein in *Chlamydomonas reinhardtii* migrates more slowly than its *Nicotiana tabacum* counterpart as it also includes the 27 first residues of the atpA coding sequence.

Courtesy of Drs Y.Choquet, K. Wostrickoff and D. Drapier, CNRS, France