

Product no **AS09 457****AtpG | ATPsynthase subunit II b' (chloroplastic)****Product information**

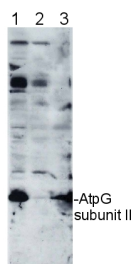
<b>Immunogen</b>	KLH-conjugated mix of synthetic peptide derived from <i>Arabidopsis thaliana</i> AtpG <a href="#">Q0WMW8</a> , <a href="#">At4g32260</a> and <i>Chlamydomonas reinhardtii</i> ATP synthase subunit b' <a href="#">A8J785</a>
<b>Host</b>	Rabbit
<b>Clonality</b>	Polyclonal
<b>Purity</b>	Serum
<b>Format</b>	Lyophilized
<b>Quantity</b>	100 µl
<b>Reconstitution</b>	For reconstitution add 100 µl of sterile water
<b>Storage</b>	Store lyophilized/reconstituted at -20°C; once reconstituted make aliquots to avoid repeated freeze-thaw cycles. Please remember to spin the tubes briefly prior to opening them to avoid any losses that might occur from material adhering to the cap or sides of the tube.

**Additional information** | This product can be sold containing ProClin if requested

**Application information**

<b>Recommended dilution</b>	1 : 10 000 (WB)
<b>Expected   apparent MW</b>	22.4 kDa ( <i>Chlamydomonas reinhardtii</i> ) 15.9 kDa ( <i>Arabidopsis thaliana</i> )
<b>Confirmed reactivity</b>	<i>Arabidopsis thaliana</i> , <i>Chlamydomonas reinhardtii</i>
<b>Predicted reactivity</b>	Algae, <i>Oryza sativa</i> , <i>Sorghum bicolor</i> , <i>Zea mays</i> , <i>Volvox carteri</i>
	Species of your interest not listed? <a href="#">Contact us</a>
<b>Not reactive in</b>	No confirmed exceptions from predicted reactivity are currently known

**Additional information** | Antibody reactivity for *Arabidopsis thaliana* has been confirmed on membrane fraction.

**Application example**

10 µg of chlorophyll/well of *Chlamydomonas reinhardtii* total cell extract (1), *Chlamydomonas reinhardtii* subunit II deletion mutant thylakoid membrane fraction (2), *Arabidopsis thaliana* thylakoid membrane fraction (3), were separated on 12-18% acrylamide-8M urea gel and blotted to nitrocellulose membrane. Filters were blocked 1 h with 5% dry milk in 1 x PBS and probed with anti-ATP synthase subunit gamma antibody (AS09 457, 1: 10 000, 1h) and secondary HRP-conjugated anti-rabbit antibody (1: 10 000, 1 h) in 1 x PBS containing 5% dry milk. All steps were performed at RT with agitation. Signal was detected with chemiluminescent detection reagent, exposure time was 1 min.

*Arabidopsis* membrane preparation has been done according to [Lezhneva et al. \(2008\)](#) A novel pathway of cytochrome c biogenesis is involved in the assembly of the cytochrome b6f complex in *Arabidopsis* chloroplasts. J Biol. Chem., 283:24608-24616 and *Chlamydomonas* membranes were prepared according to [Chua & Bennoun \(1975\)](#) Thylakoid membrane polypeptides of *Chlamydomonas reinhardtii*: wild-type and mutant strains deficient in photosystem II reaction center. PNAS 72:2175-2179

Courtesy Dr. Yves Choquet, CNRS, France