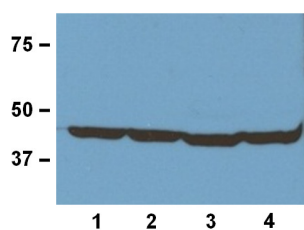


Product no **AS20 4381****Beta-Actin, (animal), mouse monoclonal****Product information**

| | |
|-------------------------------|--|
| Immunogen | Synthetic peptide derived from the N-terminal of the human beta-actin |
| Host | Mouse |
| Clonality | Monoclonal |
| Subclass/isotype | IgG2b |
| Purity | IgG2b purified on Protein A n 10mM PBS, pH 7.2, with 1% BSA and 0.05% sodium azide. |
| Format | Lyophilized |
| Quantity | 100 µg |
| Storage | Store at -20 °C for 3 years or more, Reconstitute with distilled water to desired concentration before use, Aliquot to avoid repeated freeze-thaw cycles, Store aliquots at 4 °C for several days to weeks |
| Additional information | 10mM PBS, pH 7,2, with 1% BSA and 0,05% sodium azide |

Application information

| | |
|-------------------------------|---|
| Recommended dilution | 1: 1000 - 1: 5000 (WB), for other techniques end user needs to determine most optimal dilution |
| Expected apparent MW | 42 kDa |
| Confirmed reactivity | Chicken, human, mouse, rabbit, rat |
| Not reactive in | No confirmed exceptions from predicted reactivity are currently known |
| Additional information | This antibody recognizes both the native and denatured forms of Beta-Actin from a wide range of species |

Application example

20 µg of tissue lysate from human (1), mouse (2), rat (3), rabbit (4) were extracted and separated on SDS-PAGE and blotted to a membrane. Primary antibodies were used at a dilution of 1: 1000 (1 µg/ml). Reaction was developed by chemiluminescence.