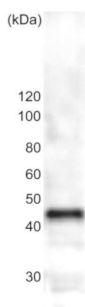


Product no **AS21 4556****Beta Tubulin (Schizosaccharomyces pombe)****Product information**

<b>Immunogen</b>	KLH-conjugated C-terminal peptide C-YEIEEEKEPLEY-OH from beta tubulin of <i>Schizosaccharomyces pombe</i> , UniProt: <a href="#">P05219</a>
<b>Host</b>	Rabbit
<b>Clonality</b>	Polyclonal
<b>Purity</b>	Immunogen affinity purified serum in PBS and 50 % glycerol, filter sterilized.
<b>Format</b>	Liquid
<b>Quantity</b>	100 µg
<b>Storage</b>	Store at -20°C; make aliquots to avoid repeated freeze-thaw cycles. Please remember to spin the tubes briefly prior to opening them to avoid any losses that might occur from material adhering to the cap or sides of the tube.

**Application information**

<b>Recommended dilution</b>	1 : 1000 (WB)
<b>Expected   apparent MW</b>	51   45 kDa
<b>Confirmed reactivity</b>	<i>Schizosaccharomyces pombe</i>
<b>Predicted reactivity</b>	Species of your interest not listed? <a href="#">Contact us</a>
<b>Selected references</b>	<a href="#">Fedyanina</a> et al. (2009) Tubulin heterodimers remain functional for one cell cycle after the inactivation of tubulin-folding cofactor D in fission yeast cells. <i>Yeast</i> . 2009 Apr;26(4):235-47. doi: 10.1002/yea.1663. PMID: 19330768; PMCID: PMC5705012.



10 µg of a crude extract of *Schizosaccharomyces pombe* was separated on SDS-PAGE and blotted to a PVDF membrane, followed by blocking in a 5 % non-fat milk for 1h/RT. The primary antibody was incubated at 1: 1000 for 1h/RT, followed by washes and incubation with a secondary goat anti-rabbit IgG HRP conjugated antibodies, used at 1: 10 000 1h/RT. The reaction was developed using chemiluminescence following manufacture's recommendations.