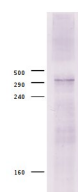


Product no **AS13 2730****CBP | CREB-binding protein homolog****Product information**

<b>Immunogen</b>	Recombinant CBP part, fused to GST, derived from <i>Drosophila melanogaster</i> protein sequence, UniProt: <a href="#">O01368</a>
<b>Host</b>	Rabbit
<b>Clonality</b>	Polyclonal
<b>Purity</b>	Immunogen affinity purified serum in PBS pH 7.4.
<b>Format</b>	Lyophilized
<b>Quantity</b>	50 µg
<b>Reconstitution</b>	For reconstitution add 50 µl of sterile water
<b>Storage</b>	Store lyophilized/reconstituted at -20°C; once reconstituted make aliquots to avoid repeated freeze-thaw cycles. Please remember to spin the tubes briefly prior to opening them to avoid any losses that might occur from material adhering to the cap or sides of the tube.

**Application information**

<b>Recommended dilution</b>	3 µg (ChIP), 1 : 500 (WB)
<b>Expected   apparent MW</b>	331 kDa
<b>Confirmed reactivity</b>	<i>Drosophila melanogaster</i>
<b>Predicted reactivity</b>	<i>Drosophila melanogaster</i>
<b>Not reactive in</b>	No confirmed exceptions from predicted reactivity are currently known

**application example**

Total nuclear protein from  $2 \times 10^6$  *Drosophila melanogaster* cultured cells was separated on 6% SDS-PAGE and blotted to PVDF using tank transfer. The blot was incubated in the primary antibody at a dilution of 1 : 500 in 1% BSA, 0.05% Tween-20, 1x PBS for 1h at RT with agitation. The antibody solution was decanted and the blot was rinsed briefly twice with 1x PBS. Blot was incubated in secondary antibody (anti-rabbit IgG AP-conjugated) diluted to 1:10 000 in 1% BSA, 0.05% Tween-20, 1x PBS for 30 min at RT with agitation. The blot was rinsed twice with 1x PBS and equilibrated in detection buffer (100mM NaCl; 10mM Tris-HCl pH9.5; 10mM MgCl<sub>2</sub>). The blot was incubated in substrate solution: 165µg/ml of BCIP and 330µg/ml of NBT in detection buffer until the signal reached the desired contrast and then rinsed with water and air dried.

Courtesy of Dr. Tatyana Kahn, Umeå University, Sweden