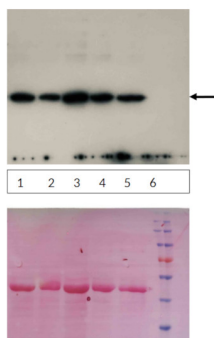


Product no **AS13 2753****CPX1 | Coproporphyrinogen-III oxidase 1****Product information**

<b>Immunogen</b>	KLH-conjugated synthetic peptide derived from <i>Arabidopsis thaliana</i> CPX1 sequence, UniProt: <a href="#">Q9LR75</a> , TAIR: <a href="#">AT1G03475</a>
<b>Host</b>	Rabbit
<b>Clonality</b>	Polyclonal
<b>Purity</b>	Serum
<b>Format</b>	Lyophilized
<b>Quantity</b>	50 µl
<b>Reconstitution</b>	For reconstitution add 50 µl, of sterile water
<b>Storage</b>	Store lyophilized/reconstituted at -20°C; once reconstituted make aliquots to avoid repeated freeze-thaw cycles. Please remember to spin the tubes briefly prior to opening them to avoid any losses that might occur from material adhering to the cap or sides of the tube.

**Additional information****Application information**

<b>Recommended dilution</b>	1 : 2000 (WB)
<b>Expected   apparent MW</b>	43,7   41 kDa
<b>Confirmed reactivity</b>	<i>Arabidopsis thaliana</i> , <i>Cucurbita pepo</i>
<b>Predicted reactivity</b>	<i>Brassica napus</i> , <i>Camelina sativa</i> , <i>Capsella rubella</i> , <i>Citrus sinensis</i> , <i>Eucalyptus grandis</i> , <i>Eutrema salsugineum</i> , <i>Jatropha curca</i> , <i>Manihot esculenta</i> , <i>Populus trichocarpa</i> , <i>Salix suchowensis</i> , <i>Tarenaya hassleriana</i> , <i>Quercus lobata</i>
<b>Not reactive in</b>	No confirmed exceptions from predicted reactivity are currently known
<b>Selected references</b>	To be added when available, antibody released in October 2021.

**Samples:**

- 1: *Cucurbita pepo* sbsp pepo
- 2: *Cucurbita pepo* sbsp pepo
- 3: *Cucurbita pepo* sbsp pepo
- 4: *Cucurbita pepo* sbsp pepo
- 5: *Arabidopsis thaliana* Col-0

5 µg/well of total protein extracted freshly from *Cucurbita pepo* or *Arabidopsis thaliana* leaves were extracted with (0.2M NaCl, 0.02M Tris-HCl pH 7.5, 1mM EDTA, 1mM PMSF, 1% NP-40, 0.2% SDS and denatured with Laemmli sample buffer at 95°C for 4 min. Proteins were separated on 8 % SDS-PAGE and blotted 1h to PVDF (pore size of 45 µm), using semi-dry transfer. Blot was blocked with 5 % milk for 1h/RT. Blot was incubated in the primary antibody at a dilution of 1: 2 000 in TBS-T for ON/4°C with agitation. The antibody solution was decanted and the blot was rinsed briefly twice, then washed once for 15 min and 3 times for 5 min in TBS-T at RT with agitation. Blot was incubated in Agrisera matching secondary antibody (anti-rabbit IgG horse radish peroxidase conjugated, [AS09 602](#)) diluted to 1: 5 000 in TBS-T for 1h/RT with agitation. The blot was washed as above and developed for 2 min with [Agrisera ECLBright](#). Exposure time was 2 min.



This product is **for research use only** (not for diagnostic or therapeutic use)

**contact: [support@agrisera.com](mailto:support@agrisera.com)**

---

Agrisera AB | Box 57 | SE-91121 Vännäs | Sweden | +46 (0)935 33 000 | [www.agrisera.com](http://www.agrisera.com)

Courtesy of Dr.Theoni Margaritopoulou, Benaki Phytopathological Institute, Greece