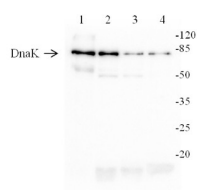


Product no **AS07 270****DnaK | chloroplast stromal chaperone****Product information**

|                       |   |
|-----------------------|---|
| <b>Immunogen</b>      | recombinant HSP70B of <i>Chlamydomonas reinhardtii</i> (XP_001696432), UniProt: <a href="#">A8HYV3</a>  |
| <b>Host</b>           | Rabbit  |
| <b>Clonality</b>      | Polyclonal  |
| <b>Purity</b>         | Serum   |
| <b>Format</b>         | Lyophilized   |
| <b>Quantity</b>       | 50 µl   |
| <b>Reconstitution</b> | For reconstitution add 50 µl of sterile water   |
| <b>Storage</b>        | Store lyophilized/reconstituted at -20°C; once reconstituted make aliquots to avoid repeated freeze-thaw cycles. Please remember to spin the tubes briefly prior to opening them to avoid any losses that might occur from material adhering to the cap or sides of the tube. |

**Application information**

|                               |   |
|-------------------------------|---|
| <b>Recommended dilution</b>   | 1 : 5000 (WB)   |
| <b>Expected   apparent MW</b> | 70 kDa  |
| <b>Confirmed reactivity</b>   | <i>Chlamydomonas reinhardtii</i> , <i>Synechocystis</i> 6803 motile, <i>Synechocystis</i> 6803 GT (glucose tolerant strain), <i>Synechococcus elongates</i> sp. PCC7942                     |
| <b>Predicted reactivity</b>   | Species of your interest not listed? <a href="#">Contact us</a>   |
| <b>Not reactive in</b>        | No confirmed exceptions from predicted reactivity are currently known   |
| <b>Additional information</b> | It is not determined which isoform of DnaK is recognized by this antibody in <i>Arabidopsis thaliana</i> .  |
| <b>Selected references</b>    | <a href="#">Göhre et al. (2006)</a> . One of Two Alb3 Proteins Is Essential for the Assembly of the Photosystems and for Cell Survival in <i>Chlamydomonas</i> The Plant Cell 18:1454–1466. |

**Application example**

15 µg of *Arabidopsis thaliana* leaf extract (1), 10 µg of total protein from: *Synechocystis* 6803 motile (2), *Synechocystis* 6803 GT (glucose tolerant strain) (3), *Synechococcus elongates* 7942 (4), Marker - Pierce™ Prestained Protein MW Marker (kat #26612): Total protein was extracted with following buffer: 10 mM Tris HCl, pH 8.0, 0.5% LDS, 4% glycerol, 0.1 mM EDTA were mixed with sample buffer and denatured for 5 min at 95°C. Samples were separated on 10% SDS-PAGE and blotted 1 h to nitrocellulose membrane (Amersham Protran) using tank wet transfer (Bio-Rad) in standard transfer buffer in presence of 20% methanol. Transfer of proteins to the membrane was checked using 0.5% Ponceau S staining before the blocking step. Blots were blocked in buffer (2% low-fat milk in 1xPBS, 0.1% Tween) for 1 h at room temperature (RT) with agitation. Blots were incubated in the primary antibody at a dilution of 1 : 5000 for 1 h at RT with agitation. The antibody solution was decanted and the blot was rinsed briefly twice, then washed once for 15 min and 3 times for 5 min in PBS-T at RT with agitation. Blot was incubated in secondary antibody (goat anti-rabbit IgG, [AS09 602](#), Agrisera) diluted to 1 : 30 000 in for 1 h at RT with agitation. The blot was washed as above and developed for 5 min with Clarity Western ECL Substrate and ChemiDoc detection system (Bio-Rad).

Courtesy Dr. Elena Pojidaeva, Laboratory of Plant Gene Expression, Timiryazev Institute of Plant Physiology RAS, 127276 Moscow Russia