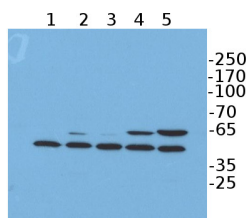


Product no **AS15 2871****DYKDDDDK (binds to Sigma FLAG®, clone FG4R)****Product information**

<b>Immunogen</b>	KLH-conjugated DYKDDDDK (FLAG) synthetic peptide
<b>Host</b>	Mouse
<b>Clonality</b>	Monoclonal
<b>Subclass/isotype</b>	IgG1
<b>Purity</b>	Total IgG. Protein A purified in 10mM PBS, pH 7.2, with 1% BSA and 0.05% sodium azide.
<b>Format</b>	Liquid
<b>Quantity</b>	50 µg
<b>Storage</b>	Store at -20 °C for up to 2 years.
<b>Additional information</b>	Working dilution for Dot Blot, ELISA and IP needs to be determined experimentally. Antibody is purified on Protein A.

**Application information**

<b>Recommended dilution</b>	1 : 1000-5000 (1-5ng) (WB) (incubate for one hour at room temperature), 1 : 500-1 :2000 (IS) For best results with other assays (Dot, ELISA, IP), please determine optimal working dilution by end user
<b>Confirmed reactivity</b>	N-terminal, C-terminal or internal DYKDDDDK-tagged fusion proteins
<b>Not reactive in</b>	No confirmed exceptions from predicted reactivity are currently known

**application example**

20 µg of total protein from *Chlamydomonas reinhardtii* Flag; 2 **(1)** 1xFlag 5'+ICL (1x FLAG coding sequence : GA-CTA-CAA-GGA-CGA-CGA-TGA-CAA-G) **(2)**; 1xFlag 5'+ICL (1x FLAG codingsequence :GA-CTA-CAA-GGA-CGA-CGA-TGA-CAA-G) **(3)**; ICL+ 3xFlag 3'end (3xFLAG codingsequence : GAC TAC AAG GAC CAC GAC GGT GAC TAC AAG GAC CAC GAC ATC GAC TAC AAG GAC GACGACGAC AAG TGA.) **(4)**; 1xFlag 5'+ICL+ 3xFlag 3'end **(5)** were separated on 12 % SDS-PAGE and blotted ON (30V) to PVDF using tank transfer. Blots were blocked with 5 % non-fat milk for 1h at room temperature (RT) with agitation. Blot was incubated in the primary antibody at a dilution of 1: 5 000 for 1h at RT with agitation. The antibody solution was decanted and the blot was rinsed briefly twice, then washed once for 15 min and 3 times for 5 min in TBS-T at RT with agitation. Blot was incubated in secondary antibody (anti-mouse IgG horse radish peroxidase conjugated) diluted to 1:10 000 in for 1h at RT with agitation. The blot was washed as above and developed for 5 min with BM ECL kit according to the manufacturer's instructions. Exposure time was seconds.

Courtesy of Dr. Nadine Coosemans, Remacle lab, University of Liège, Belgium