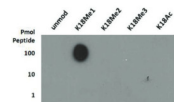
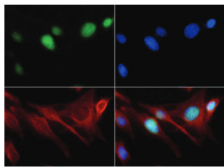


Product no **AS16 3181****H3K18me1 | Histone H3 (monomethylated Lys18)****Product information****Immunogen** | KLH-conjugated synthetic peptide**Host** | Rabbit**Clonality** | Polyclonal**Purity** | Immunogen affinity purified serum.**Format** | Liquid**Quantity** | 50 µg**Storage** | Store lyophilized/reconstituted at -20°C; once reconstituted make aliquots to avoid repeated freeze-thaw cycles. Please remember to spin the tubes briefly prior to opening them to avoid any losses that might occur from material adhering to the cap or sides of the tube.**Additional information** | This antibody preparation is provided in 20 mM Potassium Phosphate pH 7,2, 150 mM NaCl, 0,01% sodium azide and 30% glycerol**Application information****Recommended dilution** | 2-5 µg/million cells (ChIP), 1 : 1000 (Dot), 1 : 50 (IF), 1 : 100 (IHC), 1 : 500 (WB)**Expected | apparent MW** | 15 kDa**Confirmed reactivity** | Human**Predicted reactivity** | *Caenorhabditis elegans*, *Chicken*, *Drosophila melanogaster*, Mouse, Plant, Rat, *Xenopus sp.***Not reactive in** | No confirmed exceptions from predicted reactivity are currently known**application example**

Dot Blot using anti-H3K18me1 antibodies. Lane 1: unmodified. Lane 2: K18Me1. Lane 3: K18Me2. Lane 4: K18Me3. Lane 5: K18ac. Load: 1, 10, and 100 picomoles of peptide. Primary antibody used at a 1:1 000 dilution for 45 min at 4°C. Secondary antibody: Dylight@488 rabbit secondary antibody at 1:10 000 for 45 min at RT.



Immunofluorescence using anti-H3K18me1 antibodies. Tissue: HeLa cells. Fixation: 0.5% PFA. Primary antibody used at a 1:50 dilution for 1 h at RT. Secondary antibody: FITC secondary antibody at 1:10 000 for 45 min at RT. Localization: Histone H3K18me1 is nuclear and chromosomal. Staining: Histone H3K18me1 is expressed in green, nuclei and actin are counterstained with DAPI (blue) and Phalloidin (red).

250>
150>
100>
75>
50>
37>
25>
15>
10>

Western Blot using anti-H3K18me1 antibodies. 30 µg of NIH-3T3 histone extracts. Primary antibody used at a 1:500 dilution overnight at 4°C. Secondary antibody: IRDye800™ rabbit secondary antibody at 1:10 000 for 45 min at RT.