

Product no **AS16 3172****H3K4me3T6p | H3 (trimethylated Lys4, p Thr6)**

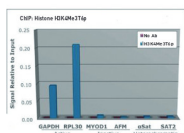
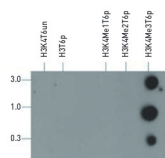
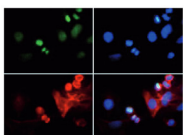
## Product information

**Immunogen** | KLH-conjugated synthetic peptide**Host** | Rabbit**Clonality** | Polyclonal**Purity** | Immunogen affinity purified serum.**Format** | Liquid**Quantity** | 50 µg**Storage** | Store lyophilized/reconstituted at -20°C; once reconstituted make aliquots to avoid repeated freeze-thaw cycles. Please remember to spin the tubes briefly prior to opening them to avoid any losses that might occur from material adhering to the cap or sides of the tube.**Additional information** | This antibody preparation is provided in 20 mM Potassium Phosphate pH 7,2, 150 mM NaCl, 0,01% sodium azide and 30% glycerol

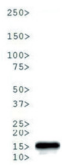
## Application information

**Recommended dilution** | 2-5 µg/million cells (ChIP), 1 : 1000 (Dot), 1 : 50 (IF), 1 : 50 (IHC), 1 : 500 (WB)**Expected | apparent MW** | 15 kDa**Confirmed reactivity** | *Caenorhabditis elegans*, Human**Predicted reactivity** | *Drosophila melanogaster*, Mouse, Plant, Rat, *Xenopus sp.***Not reactive in** | No confirmed exceptions from predicted reactivity are currently known

### application example

**Chromatin Immunoprecipitation** using anti-H3K4me3T6p antibodies. Chromatin from one million formaldehyde cross-linked HeLa cells was used with 2 µg of H3K4me3T6p antibody alongside a no antibody (No Ab) control, DNA was measured by qPCR and normalized to total input.**Dot Blot** using anti-H3K4me3T6p antibodies. Lane 1: Unmodified. Lane 2: T6p. Lane 3: K4Me1T6p. Lane 4: K4Me2T6p. Lane 5: K4Me3T6p. Load: 3, 1, and 0.3 picomoles of peptide. Primary antibody used at a 1:1 000 dilution for 45 min at 4°C. Secondary antibody: Dylight®488 rabbit secondary antibody at 1:10 000 for 45 min at RT.**Immunofluorescence** using anti-H3K4me3T6p antibodies. Tissue: HeLa cells. Fixation: 0.5% PFA. Primary antibody used at a 1:50 dilution for 1 h at RT. Secondary antibody: FITC secondary antibody at 1:10 000 for 45 min at RT. Localization: Histone H3K4me3T6p is nuclear and

chromosomal. Staining: H3K4me3T6p is expressed in green and the nuclei and alpha-tubulin are counterstained with DAPI (blue) and Dylight® 594 (red).



Western Blot using anti-H3K4me3T6p antibodies. 30 µg *C. elegans* embryo lysate. Primary antibody at 1:500 overnight at 4°C. Secondary antibody: IRDye800™ rabbit secondary antibody at 1:10 000 for 45 min at RT.