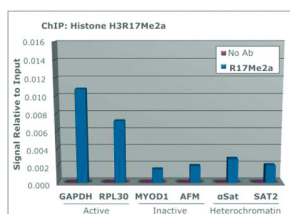
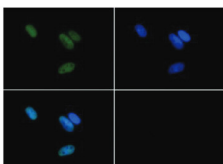
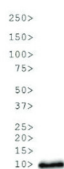
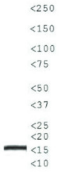


Product no **AS16 3180****H3R17me2(asym) | Histone H3 (asym-dimethyl Arg17)****Product information****Immunogen** | KLH-conjugated synthetic peptide**Host** | Rabbit**Clonality** | Polyclonal**Purity** | Immunogen affinity purified serum.**Format** | Liquid**Quantity** | 50 µg**Storage** | Store lyophilized/reconstituted at -20°C; once reconstituted make aliquots to avoid repeated freeze-thaw cycles. Please remember to spin the tubes briefly prior to opening them to avoid any losses that might occur from material adhering to the cap or sides of the tube.**Additional information** | This antibody preparation is provided in 20 mM Potassium Phosphate pH 7,2, 150 mM NaCl, 0,01% sodium azide and 30% glycerol**Application information****Recommended dilution** | 2-5 µg/million cells (ChIP), 1 : 50 (IF), 1 : 500 (WB)**Expected | apparent MW** | 15 kDa**Confirmed reactivity** | Caenorhabditis elegans, Human**Predicted reactivity** | Chicken, *Drosophila melanogaster*, Mouse, Plant, Rat, *Xenopus sp.***Not reactive in** | No confirmed exceptions from predicted reactivity are currently known**application example****Chromatin Immunoprecipitation** using anti-H3R17me2a antibodies. Chromatin from one million formaldehyde cross-linked HeLa cells was used with 2 µg of H3R17me2a antibody alongside a no antibody (No Ab) control. DNA was measured by qPCR and normalized to total input.**Immunofluorescence** using anti-H3R17me2a antibodies. Tissue: HeLa cells. Fixation: 0.5% PFA. Primary antibody used at a 1:50 dilution for 1 h at RT. Secondary antibody: FITC secondary antibody at 1:10 000 for 45 min at RT. Localization: Histone H3R17me2a is nuclear and chromosomal. Staining: Histone H3R17me2a is expressed in green, nuclei are counterstained with Dapi (blue).**Western Blot** anti-H3R17me2a antibodies. 30 µg of *C. elegans* embryo lysate. Primary antibody used at a 1:500 dilution overnight at 4°C.

Secondary antibody: IRDye800™ rabbit secondary antibody at 1:10 000 for 45 min at RT.



**Western Blot** using-H3R17me2a antibodies. 30 µg of NIH-3T3 histone extracts. Primary antibody used at a 1:500 dilution overnight at 4°C. Secondary antibody: IRDye800™ rabbit secondary antibody at 1:10 000 for 45 min at RT.