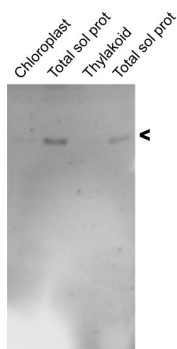


Product no **AS15 2899****Lysine-tRNA ligase****Product information**

Immunogen	KLH-conjugated synthetic peptide derived from Lysine-tRNA ligase protein sequence of <i>Arabidopsis thaliana</i> UniProt: Q39101 , TAIR: AT3G01060
Host	Rabbit
Clonality	Polyclonal
Purity	Serum
Format	Lyophilized
Quantity	100 µl
Reconstitution	For reconstitution add 100 µl of sterile water
Storage	Store lyophilized/reconstituted at -20°C; once reconstituted make aliquots to avoid repeated freeze-thaw cycles. Please remember to spin the tubes briefly prior to opening them to avoid any losses that might occur from material adhering to the cap or sides of the tube.

Application information**Recommended dilution** | 1 : 500 (WB)**Expected | apparent MW** | 41 kDa**Confirmed reactivity** | *Arabidopsis thaliana***Additional information** | This protein is present in very low levels, therefore western blot conditions need to be adjusted by higher protein load/well and usage of a very sensitive detection system**Application example**

20 µg of protein from *Arabidopsis thylakoids* or chloroplasts were separated on 12 % SDS-PAGE and blotted 1h to nitrocellulose membrane using tank transfer. Blots were blocked with 10% Milk for 1h at room temperature (RT) with agitation. Blot was incubated in the primary antibody at a dilution of 1: 500 overnight with agitation. The antibody solution was decanted and the blot was rinsed briefly twice, then washed three times for 15 min in TBS-T at RT with agitation. Blot was incubated in secondary antibody (anti-rabbit IgG horseradish peroxidase conjugated, [AS09 602](#) Agrisera) diluted to 1: 8 000 in TTBS for 1h at RT. The blot was washed as above and developed for 5 min with ECL according to the manufacturer's instructions. Exposure time was 3 minute.

Total soluble proteins (stroma) extracted from 0.2 g leaf by homogenization in a buffer containing 20 mM Tris-HCl, pH 9.0, 250m MNaCl, 50m MNaHCO₃, 4mMMgCl₂, and an EDTA-free protease inhibitor cocktail (Roche). After removal of cell debris by centrifugation for 5min at 13,000g and 4°C, a volume corresponding to 10 µg of protein was loaded on 12% SDS-PAGE and blotted as described above.

Courtesy of Dr. Rikard Fristedt, VU University Amsterdam, The Netherlands