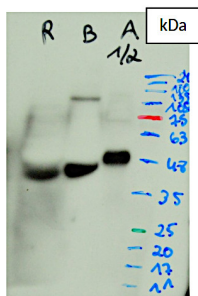


Product no **AS15 3091****VDE | Violaxanthin de-epoxidase****Product information**

<b>Immunogen</b>	His-tagged, recombinant VDE from <i>Arabidopsis thaliana</i> , overexpressed in <i>E.coli</i> , Uniprot: <a href="#">Q39249</a> , TAIR: <a href="#">AT1G08550</a>
<b>Host</b>	Rabbit
<b>Clonality</b>	Polyclonal
<b>Purity</b>	Serum
<b>Format</b>	Lyophilized
<b>Quantity</b>	50 µl
<b>Reconstitution</b>	For reconstitution add 200 µl of sterile water
<b>Storage</b>	Store lyophilized/reconstituted at -20°C; once reconstituted make aliquots to avoid repeated freeze-thaw cycles. Please remember to spin the tubes briefly prior to opening them to avoid any losses that might occur from material adhering to the cap or sides of the tube.

**Application information**

<b>Recommended dilution</b>	1 : 2000 (WB)
<b>Expected   apparent MW</b>	Propeptide 52 kDa, mature protein: 39.7 kDa, migrates at 40 kDa ( <i>Arabidopsis thaliana</i> )
<b>Confirmed reactivity</b>	<i>Arabidopsis thaliana</i> , <i>Brachypodium distachyon</i> , <i>Deschampsia antarctica</i> , <i>Oryza sativa</i>
<b>Predicted reactivity</b>	<i>Brassica napus</i> , <i>Camellia sinensis</i> , <i>Citrus limon</i> , <i>Cucumis sativus</i> , <i>Chrysanthemum morifolium</i> , <i>Citrus sinensis</i> , <i>Coffea arabica</i> , <i>Fragaria ananassa</i> , <i>Glycine soja</i> , <i>Gossypium arboreum</i> , <i>Lactuca sativa</i> , <i>Lycium barbarum</i> , <i>Morus notabilis</i> , <i>Nicotiana tabacum</i> , <i>Phyllostachys edulis</i> , <i>Picea abies</i> , <i>Prunus humilis</i> , <i>Spinacia oleracea</i> , <i>Solanum lycopersicum</i> , <i>Theobroma cacao</i> , <i>Triticum aestivum</i> , <i>Zea mays</i> , <i>Zingiber officinale</i> , <i>Vitis vinifera</i>
	Species of your interest not listed? <a href="#">Contact us</a>
<b>Not reactive in</b>	Diatoms
<b>Additional information</b>	Extraction buffer must contain 7 M urea for <i>Brachypodium distachyon</i> and <i>Oryza sativa</i> samples. This product can be sold containing ProClin if requested.

**Samples:**R – 10 µL of total protein extract of *Oryza sativa* (50 mg macerated leaves in 100 µL Lysis Buffer).B – 10 µL of total protein extract of *Brachypodium distachyon* (50 mg macerated leaves in 100 µL Lysis Buffer).A – 10 µL of total protein extract of *Arabidopsis thaliana* diluted to 1:2 (50 mg macerated leaves in 200 µL 2X Laemmli Buffer). MW marker: NZYColour Protein Marker II from NZYTech.

10 µL of total protein extracted freshly from *Arabidopsis thaliana*, *Brachypodium distachyon*, and *Oryza sativa* with Lysis Buffer (7M Urea, 2M Thiourea, 4% CHAPS, 35 mM Tris), and denatured in 1X Laemmli with 25 mM DTT at 95°C for 4 min, were separated on 10 % SDS-PAGE and blotted 1h to PVDF membrane (pore size of 0.45 µm, GE Healthcare), using wet transfer. Blot was blocked with Blocking solution containing 5% milk in TBS-T, for 1h/RT with agitation. Blot was incubated in the primary antibody at a dilution of 1:2000 in Blocking solution containing 5% milk in TBS-T, for O/N at 4°C, with agitation. The antibody solution was decanted, and the blot was washed 3 times for 10 min in TBS-T at RT with agitation. Blot was incubated in secondary antibody (anti-rabbit IgG, horse radish peroxidase conjugated) diluted to 1:20 000 in Blocking solution containing 5% milk in TBS-T, for 1h/RT with agitation. The blot was washed 6 times for 5 min in TBS-T at RT with agitation and developed for 30 seconds with Agrisera [ECLSuperBright](#). Exposure time was 10 seconds.

Courtesy of Dr. Nelson Saibo, Plant Gene Regulation Lab (GPlantS Unit), ITQB NOVA, Portugal